

### New Pet Gerbil Shopping List

- 10 gallon aquarium tank
- Lid (often in reptile section)
- Clips
- Water bottle
- Water bottle holder
- Food (14% protein minimum)
- Bedding – Carefresh, corncob, or aspen
- Chinchilla dust or sand
- Hay or fresh veggies
- Recycled paper tubes & boxes
- Unscented toilet paper for nest

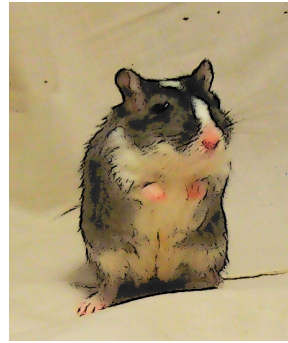
#### *Optional:*

- Wheel (8")
- Stick-on aquarium thermometer

#### *Basic Care*

- Food & water daily
- Clean water bottle weekly
- Clean tank monthly
- Occasional dust/sand bath
- Temperature 60-80F
- Something to chew every other day
- Love, attention & exercise

*Shawsheen River Gerbils*



### New Pet Gerbil Shopping List

- 10 gallon aquarium tank
- Lid (often in reptile section)
- Clips
- Water bottle
- Water bottle holder
- Food (14% protein minimum)
- Bedding – Carefresh, corncob, or aspen
- Chinchilla dust or sand
- Hay or fresh veggies
- Recycled paper tubes & boxes
- Unscented toilet paper for nest

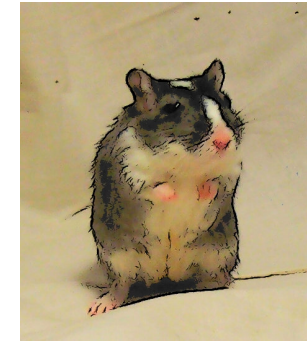
#### *Optional:*

- Wheel (8")
- Stick-on aquarium thermometer

#### *Basic Care*

- Food & water daily
- Clean water bottle weekly
- Clean tank monthly
- Occasional dust/sand bath
- Temperature 60-80F
- Something to chew every other day
- Love, attention & exercise

*Shawsheen River Gerbils*



### New Pet Gerbil Shopping List

- 10 gallon aquarium tank
- Lid (often in reptile section)
- Clips
- Water bottle
- Water bottle holder
- Food (14% protein minimum)
- Bedding – Carefresh, corncob, or aspen
- Chinchilla dust or sand
- Hay or fresh veggies
- Recycled paper tubes & boxes
- Unscented toilet paper for nest

#### *Optional:*

- Wheel (8")
- Stick-on aquarium thermometer

#### *Basic Care*

- Food & water daily
- Clean water bottle weekly
- Clean tank monthly
- Occasional dust/sand bath
- Temperature 60-80F
- Something to chew every other day
- Love, attention & exercise

*Shawsheen River Gerbils*